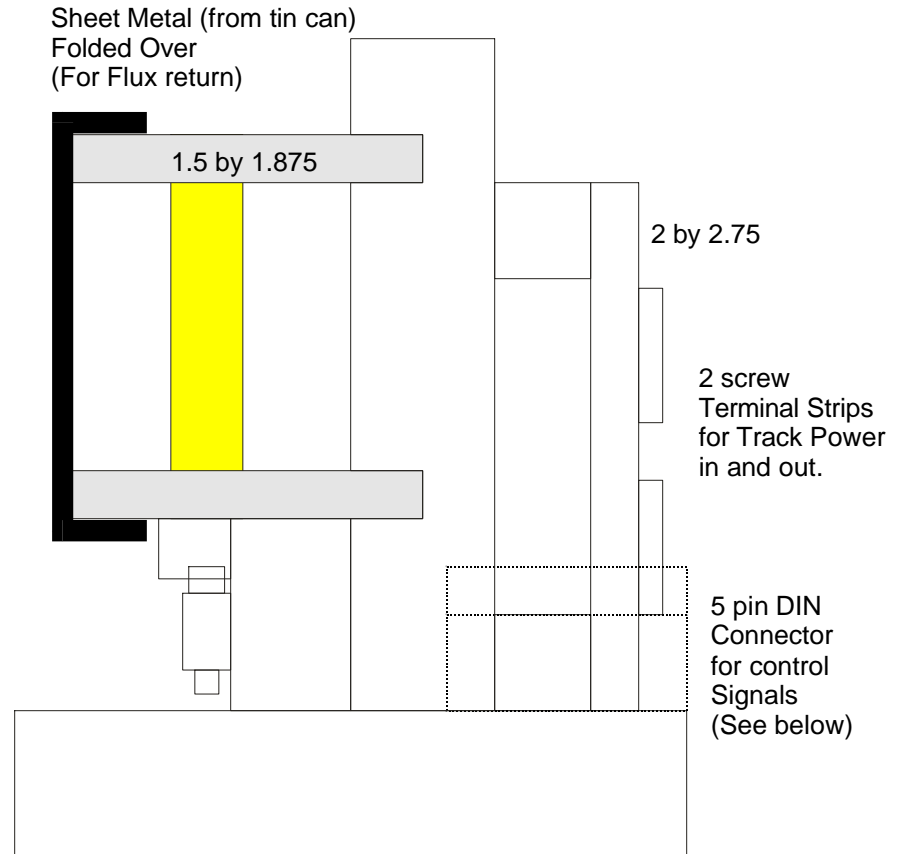
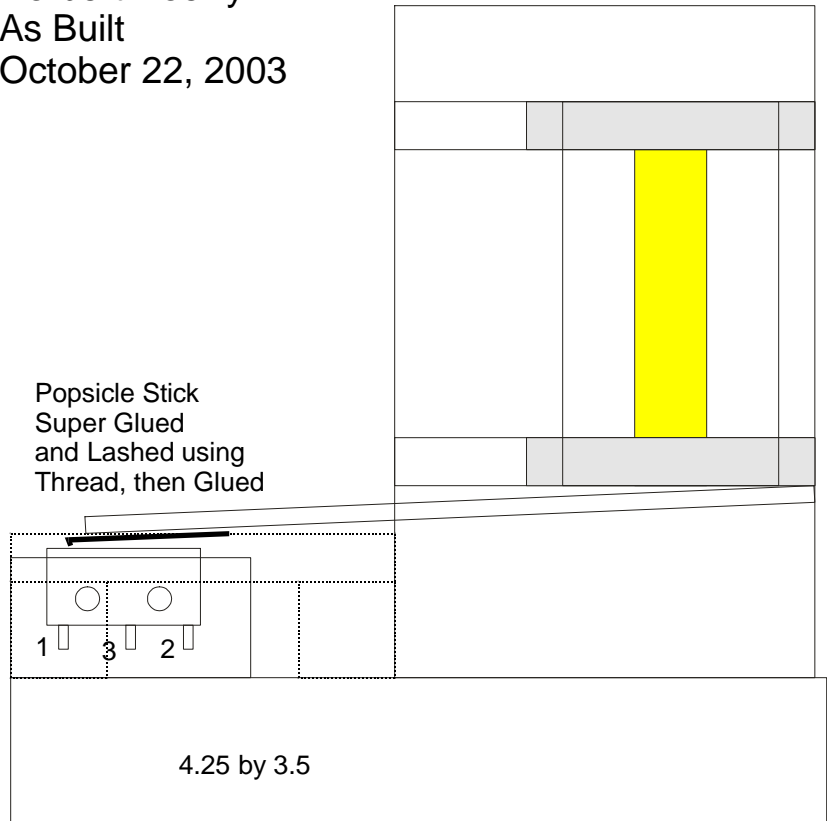
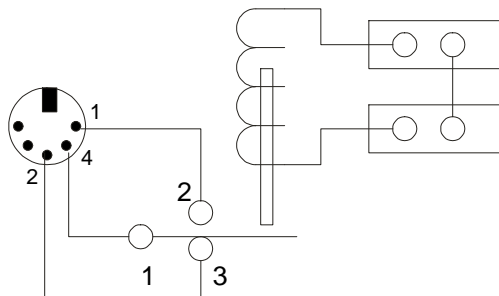


Electric Track Trip
 Norbert Doerry
 As Built
 October 22, 2003

Iron core is 7 mm by 1.5 inches and weighs 11 gm
 Tube is Styrene, 11/32 inch Item 231 from Evergreen Scale Models



Coil is 330 turns of 22 Gauge Magnet Wire.



Note: Microswitch is
 Radio Shack 275-016A
 Contacts rated at 5A at 125/250VAC
 1 = common (Ground)
 2 = Normally Closed (Train there: Control A)
 3 = Normally Open (Train not there: Control B)

Note: Microswitch operation is
 measured at 40-45 gm. Core
 weighs 11 gm.

