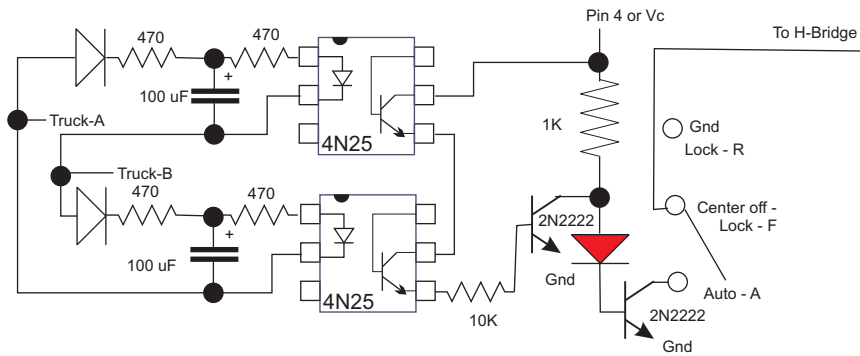
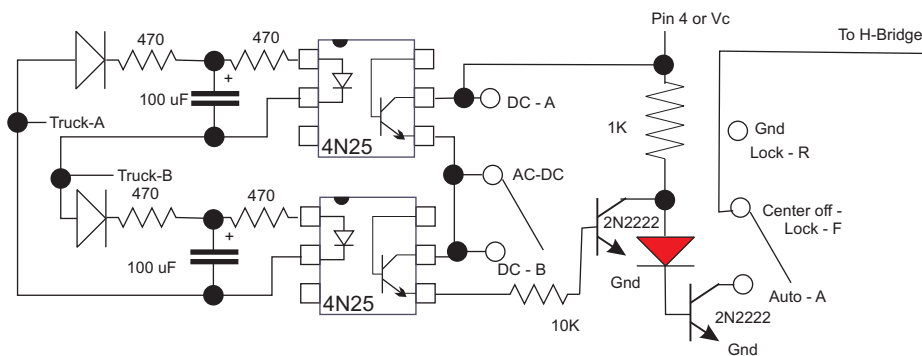


Baseline AC-DC gate control



Modified to enable either AC-DC or DC only Control



This second switch enables the circuit to be used for DC layouts, AC-DC layouts, and if remote directional control not desired, for AC layouts too. DC-A and DC-B switch positions control the polarity of the rails that cause the train to go forward. The DC must be filtered (not just rectified) to ensure the inductance doesn't result in negative voltages.

