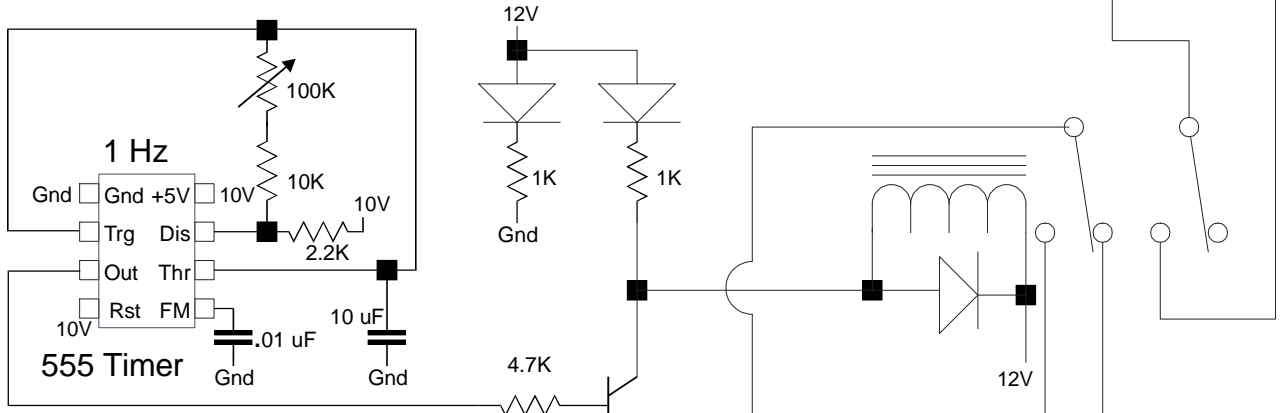
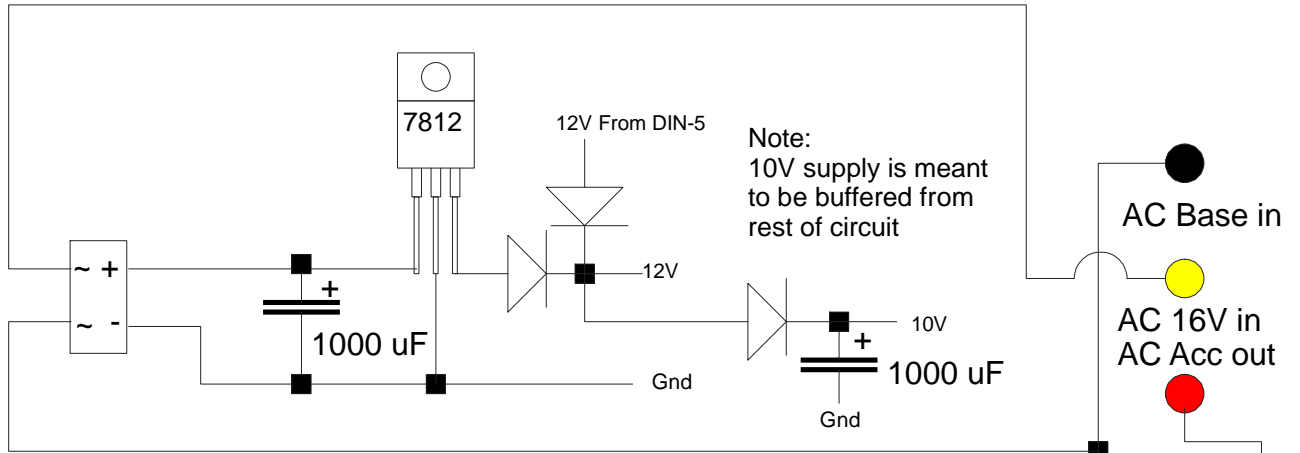
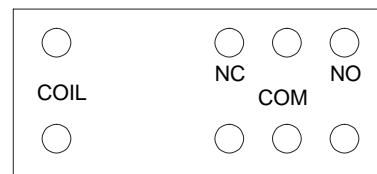
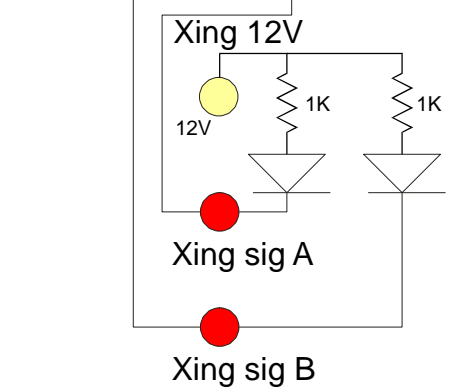
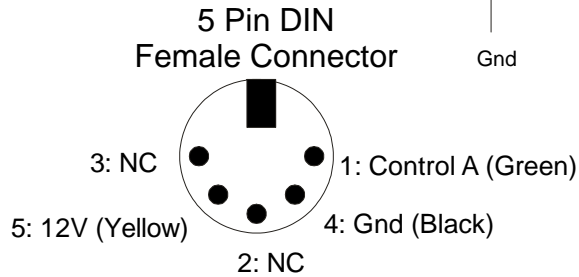
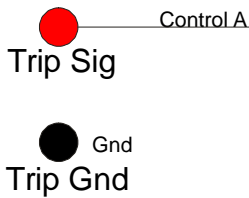


# CROSSING LIGHTS CONTROL CIRCUIT

Norbert Doerry  
December 6, 2003

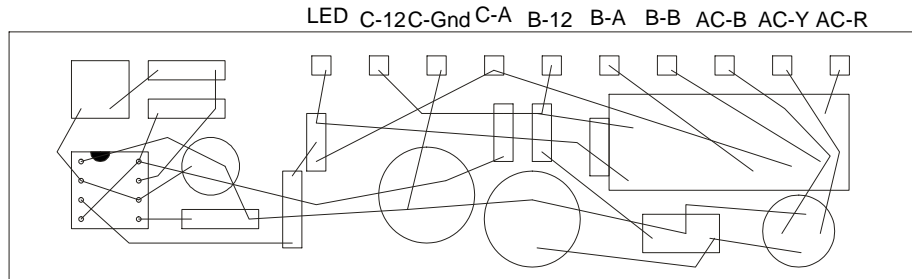


NOTE: Measurements at B&O Museum on June 24, 2002 indicate the clock should have a period of 1.35 seconds or 0.74 Hz. (27 seconds for 20 flashes)



# CROSSING LIGHTS CONTROL CIRCUIT

Norbert Doerry  
December 21, 2003



Note: AC Base in and AC 16V in can be any source of AC or DC power between 10 and 16 volts

