

IR-LED source

External infrared Track Trip

Norbert Doerry
December 15, 2015

Infrared Track Trip

Norbert Doerry

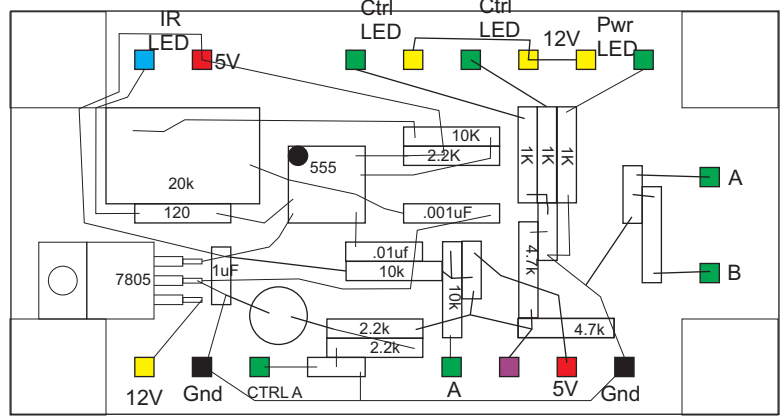
December 24, 2007

Rev A: January 1, 2008

Rev B: Dec 2015

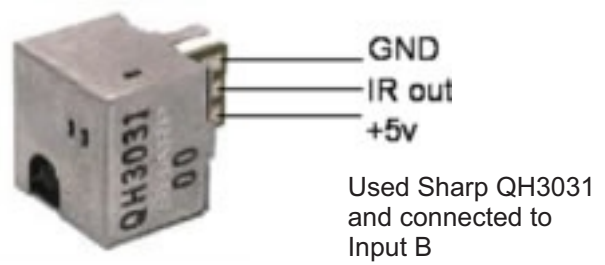
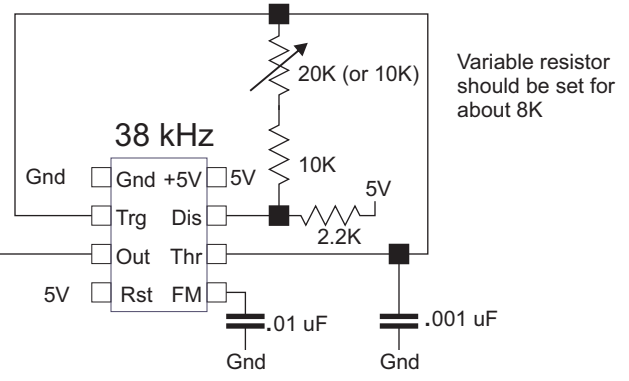
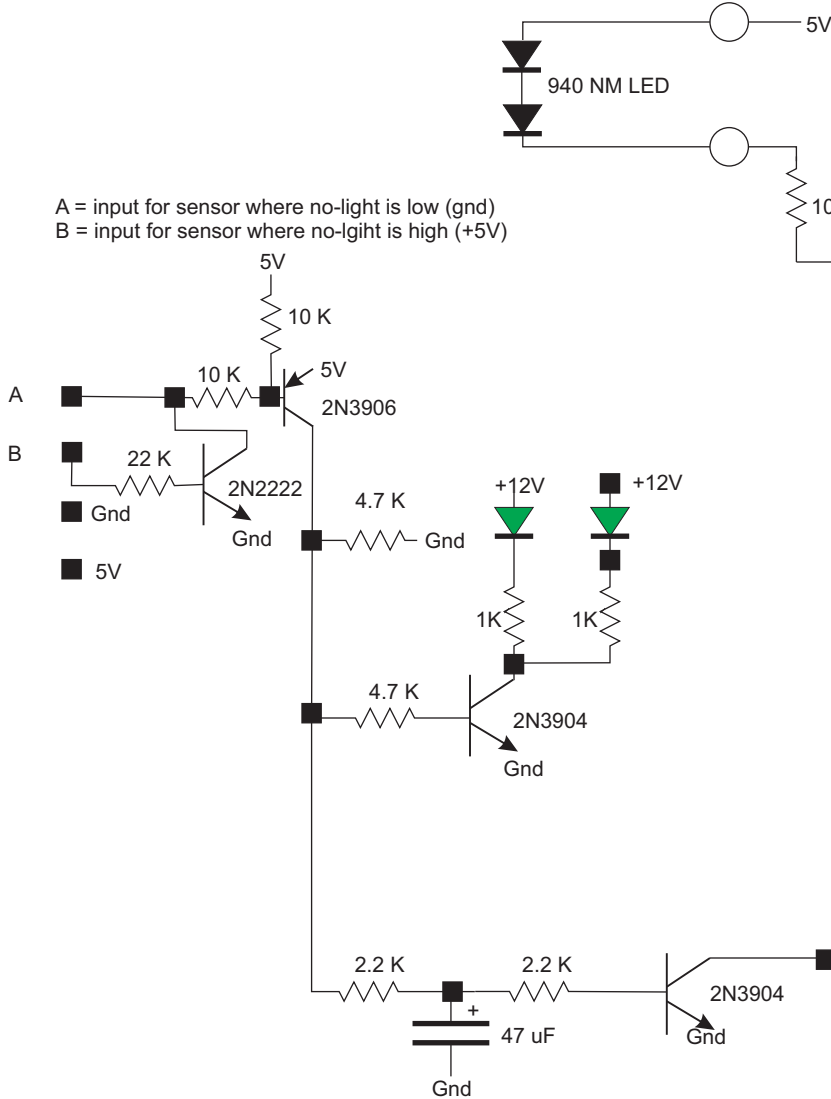
Rev C: Dec 2015

Board is 2.1 by 4

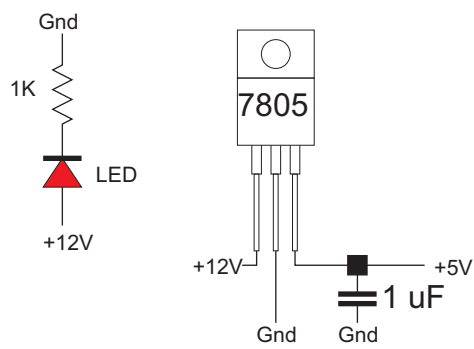
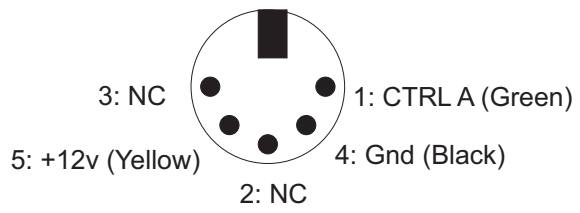


Train interrupts the IR Light Beam

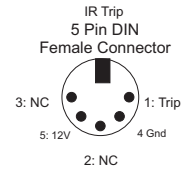
A = input for sensor where no-light is low (gnd)
 B = input for sensor where no-light is high (+5V)



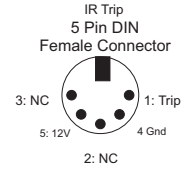
5 Pin DIN Female Connector



IR Track Trip
 Norbert Doerry
 December 2015

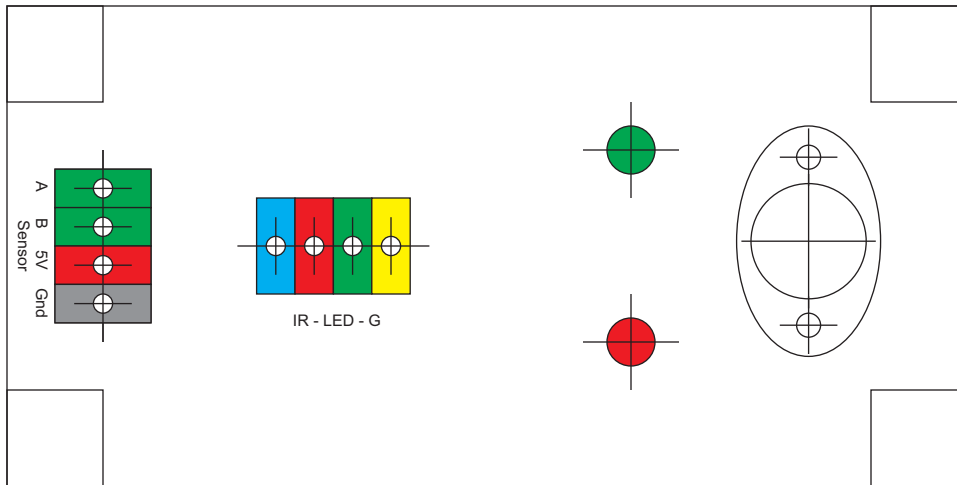


IR Track Trip
 Norbert Doerry
 December 2015



A = sensor where no-light is low (gnd)
 B = sensor where no-light is high (+5V)

A = sensor where no-light is low (gnd)
 B = sensor where no-light is high (+5V)



A B 5V Gnd
 Sensor

A B 5V Gnd

IR - LED - G

Power

Power

A B 5V Gnd
 Sensor

A B 5V Gnd

IR - LED - G

Power

Power

IR Track Trip
 December 2015