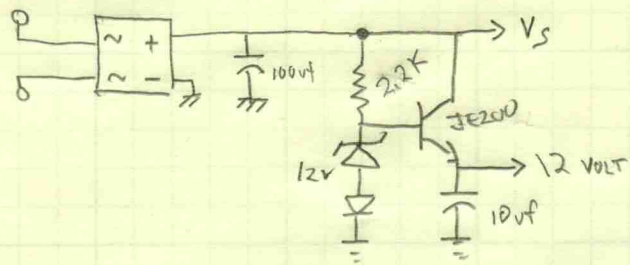
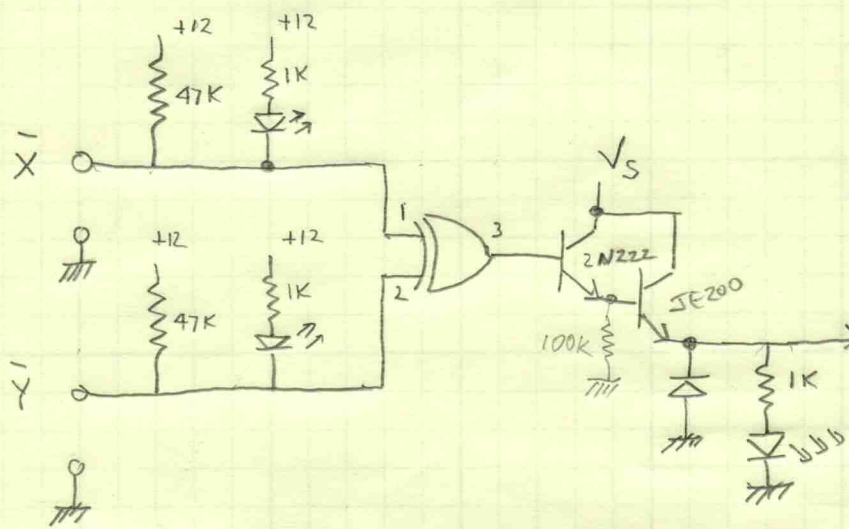


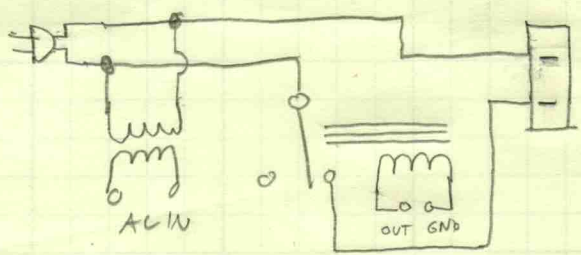
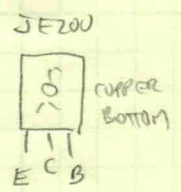
NORBERT DOERRY
 15 NOV 93
 REVISED
 21 NOV 93



LOW VOLTAGE
 2WAY 120VAC
 SWITCH



74C06
 PIN 14 +12
 13 +12
 12 +12
 11 NC
 10 +12
 9 +12
 8 NC
 7 GND
 6 NC
 5 GND
 4 GND

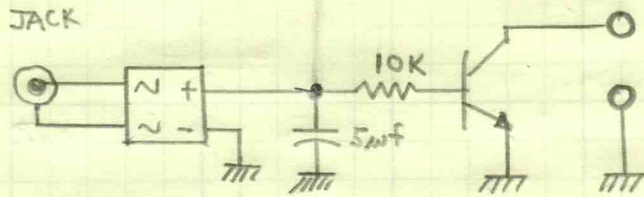
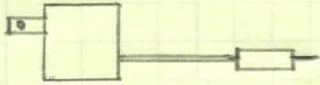


BOARD INPUTS

- 120 AC IN
- 120 AC IN
- 120 AC OUT
- 120 AC OUT

- GND
- X
- Y
- X LED
- Y LED
- O LED

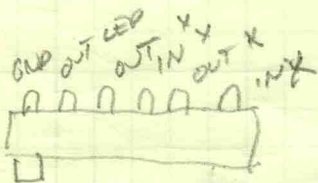
POWER SENSOR
NORBERT DOERRY
13 NOV 93



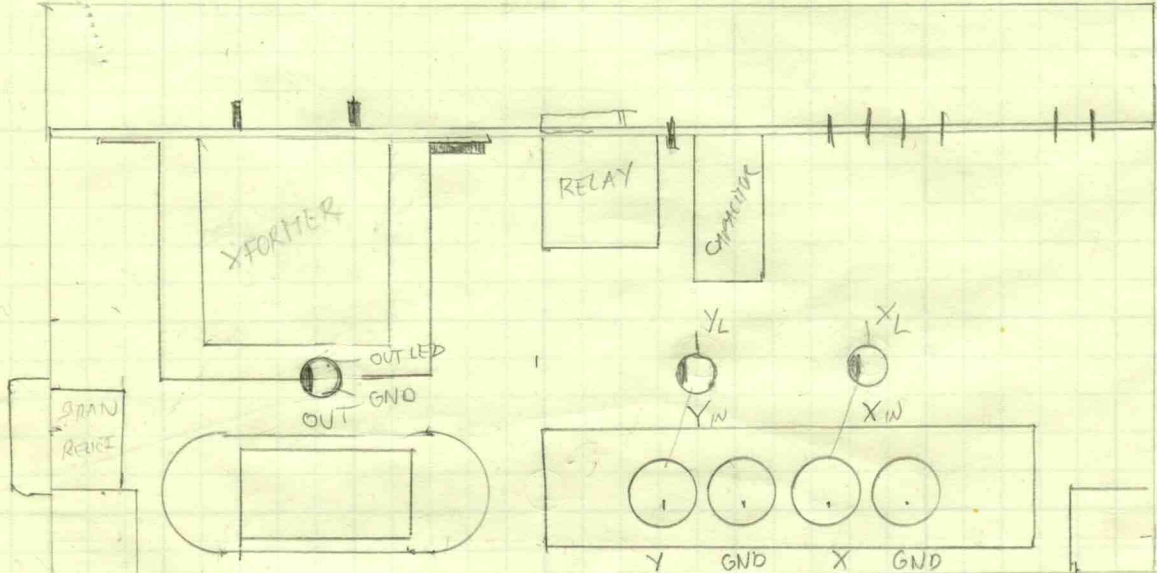
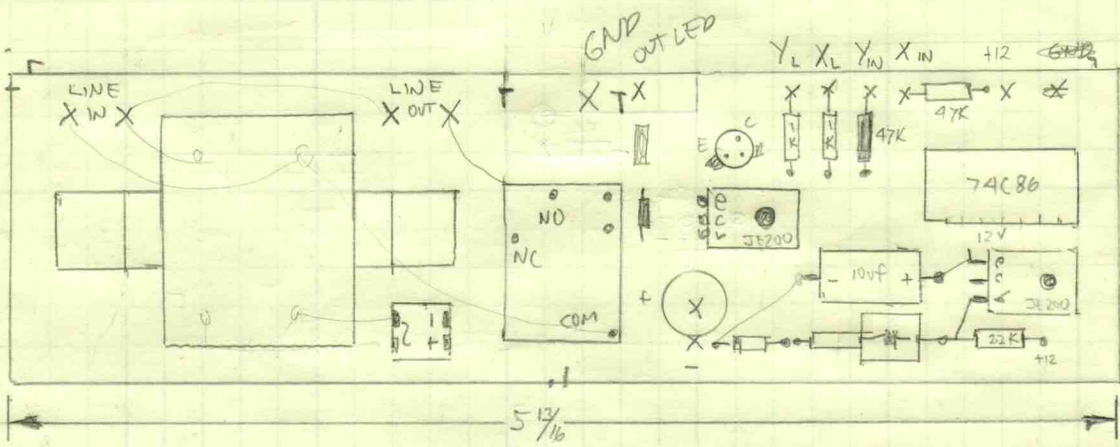
BOARD LAYOUT

NORBERT DOERRY

17 NOV 93



BOARD NOT BUILT EXACTLY TO DRAWING



5 5/16 = 1 5/8

13/16
5/8